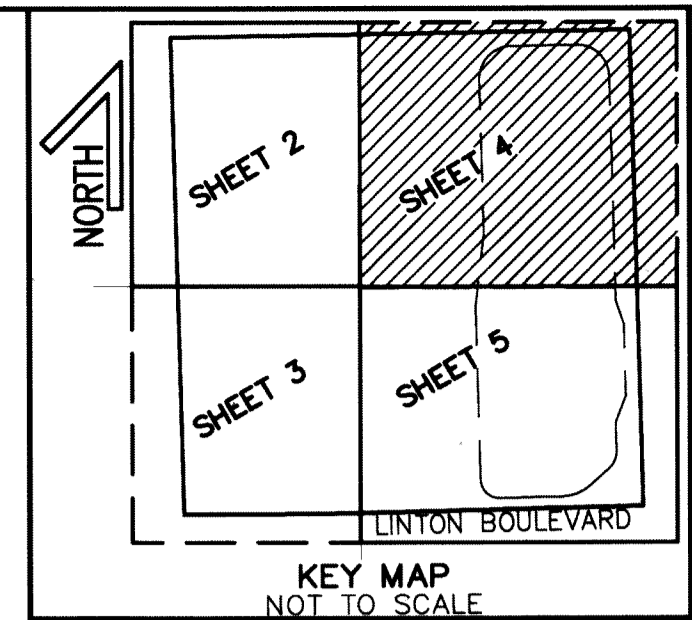


# DELRAY MEDICAL PARCEL

A REPLAT OF PARCEL "A", DELRAY OUTPATIENT PROPERTIES PLAT, ACCORDING TO THE PLAT THEREOF, AS RECORDED IN PLAT BOOK 99, PAGES 197 THROUGH 201 OF THE PUBLIC RECORDS OF PALM BEACH COUNTY, FLORIDA, LYING IN SECTION 24, TOWNSHIP 46 SOUTH, RANGE 42 EAST, CITY OF DELRAY BEACH, PALM BEACH COUNTY FLORIDA.

THIS INSTRUMENT WAS PREPARED BY  
 JEFFERY R. WAGNER, PLS  
 OF  
**CAULFIELD and WHEELER, INC.**  
 ENGINEERS - PLANNERS - SURVEYORS  
 7900 GLADES ROAD, SUITE 100  
 BOCA RATON, FLORIDA 33434 - (561)392-1991

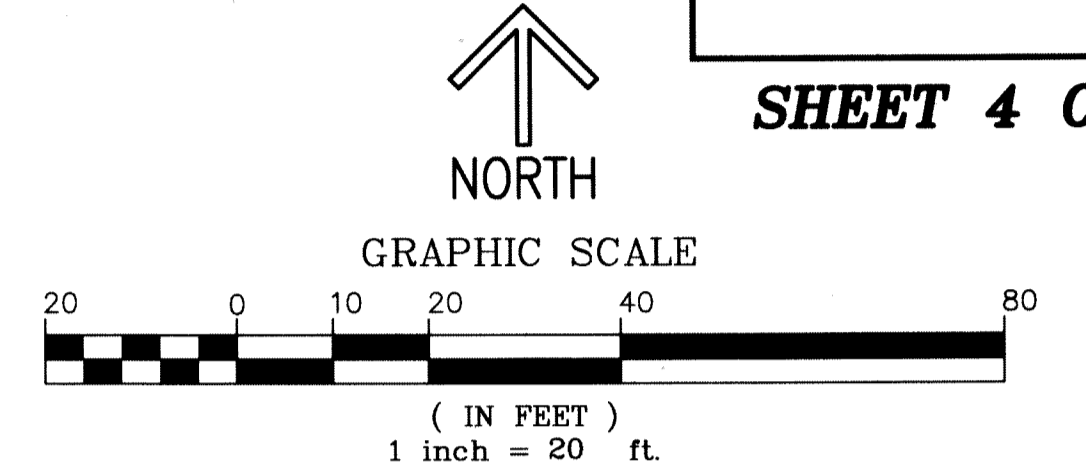


# 190

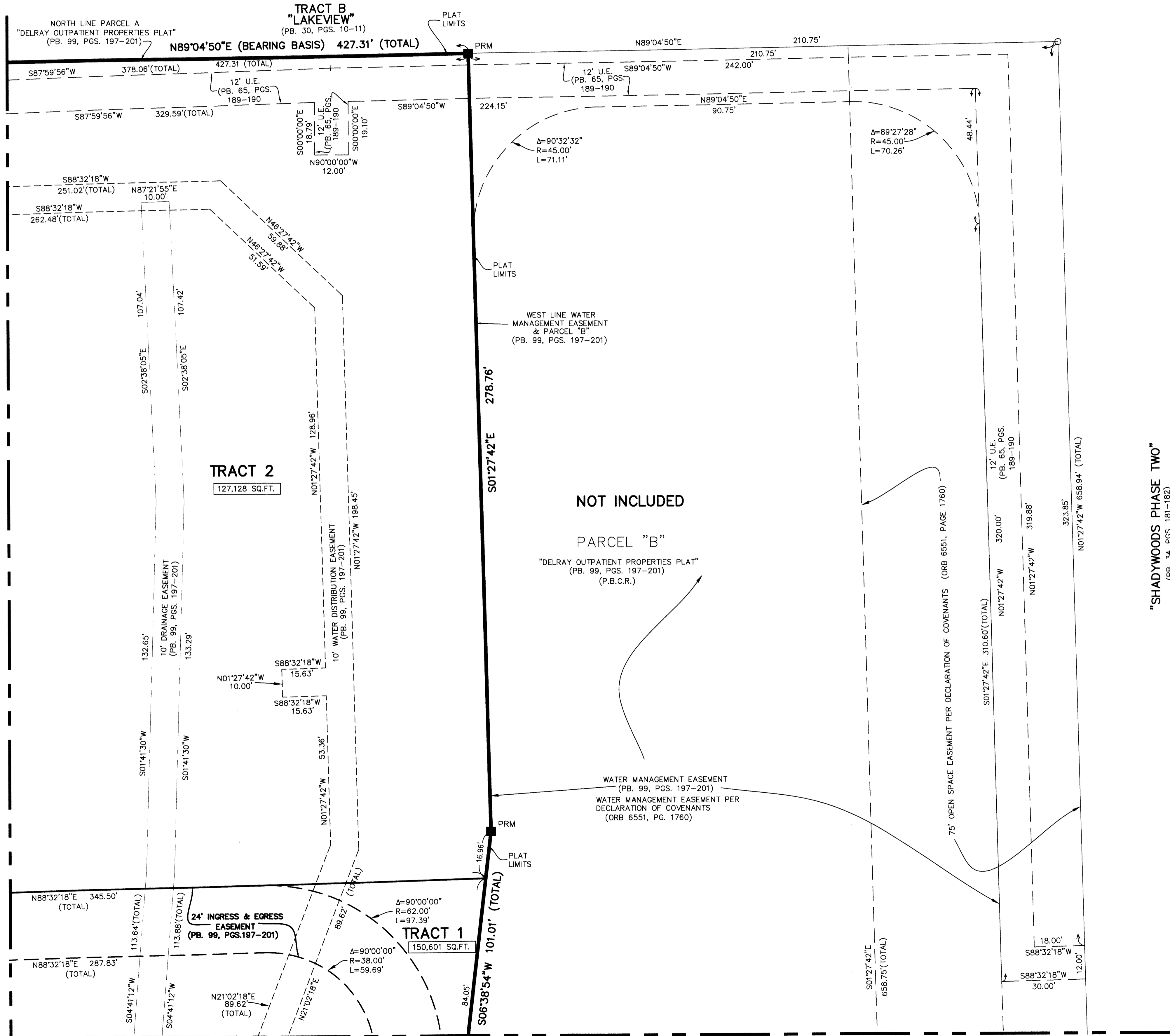
STATE OF FLORIDA  
 COUNTY OF PALM BEACH  
 THIS PLAT WAS FILED FOR  
 RECORD AT \_\_\_\_\_ M.  
 THIS \_\_\_\_\_ DAY OF \_\_\_\_\_  
 A.D. 20\_\_\_\_ AND DULY RECORDED  
 IN PLAT BOOK \_\_\_\_\_ ON  
 PAGES \_\_\_\_\_ THRU \_\_\_\_\_

SHARON R. BOCK  
 CLERK CIRCUIT COURT

BY: \_\_\_\_\_  
 DEPUTY CLERK



MATCH LINE SEE SHEET 2 OF 5



MATCH LINE SEE SHEET 5 OF 5

"SHADYWOODS PHASE TWO"  
 (PB. 34, PGS. 181-182)